

Equitable Community Engagement

October 10, 2019

Sandy Mackay, BC Healthy Communities

Melinda Smyrl, District of Sicamous





Sandy Mackay

Community Planner



Melinda Smyrl

Planner



PLAN H



The **PlanH** program supports local government engagement and partnerships across sectors for creating healthier communities. Recognizing that community policy, plans, and decisions affect health and well-being, PlanH provides learning opportunities, resources, and leading-edge practices for collaborative local action. Working together with health authorities, UBCM and the Ministry of Health, PlanH supports the Province's health promotion strategy.

AT A GLANCE:

Deliverables emphasize three key objectives:

1. Local Government Support – grants, project expertise, etc.
2. Health Authority Support – education, advice, resource development, etc.
3. Collaborative Support – emphasize LG and HA partnership in all projects

195 communities supported (2012-present)

Including: Sicamous, Kamloops, North Okanagan, Oliver, Central Kootenay, Ki Low Na Friendship Centre, Neskonlith Band, Yale First Nation, Xatśūll First Nation.

PLAN H



EQUITY AND COMMUNITY ENGAGEMENT

An ongoing PROCESS, not a PROJECT

- Equitable engagement is ongoing
- Making connections, creating relationships, and developing a deep understanding of your community

Equitable engagement can enhance community health and well-being

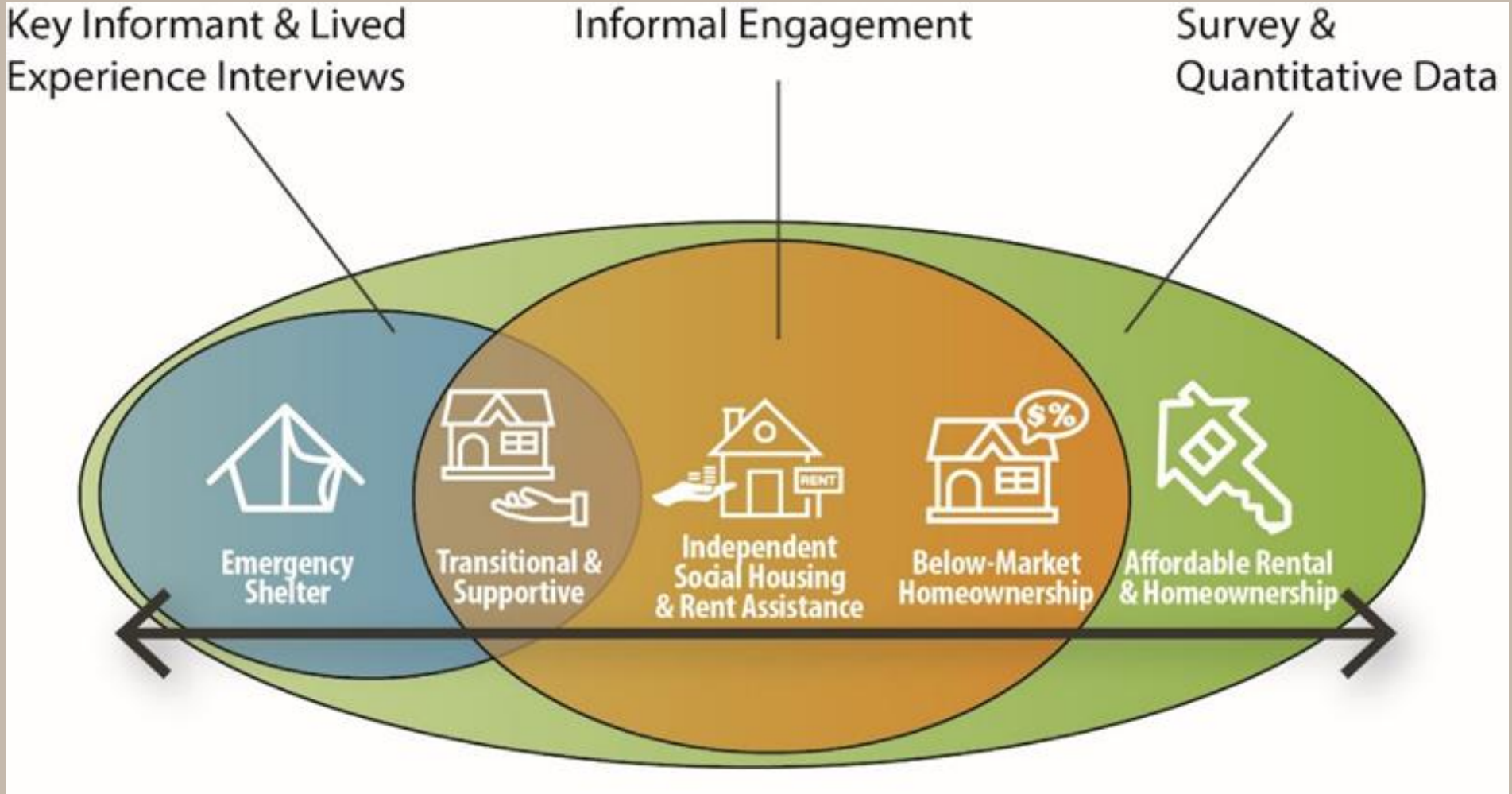
- Gives community members greater opportunity to determine the circumstances and the nature of the environments in which they live, work, learn, and play
- Generates more comprehensive data that can inform policies and strategies
- Builds trust within the community while ensuring well-rounded decision-making and more equitable service delivery

EQUITY AND COMMUNITY ENGAGEMENT

Elements of Healthy Community Engagement

- **Reflective**
 - Requires consideration of the systemic barriers to engagement in public processes and what practices may be inaccessible to people
 - Who is participating and providing input, and who is being excluded, either purposefully or due to systemic barriers inherent in your community's current engagement?
 - Planning has been critiqued for being inaccessible to Indigenous peoples, newcomers, youth, older adults and **people** with diverse abilities
- **Authentic**
 - Planners are genuinely interested in hearing from community members and can acknowledge understanding of community has been imperfect
- **Transparent**
 - Community members are made aware of exactly what they are being engaged about, what agency they have over the decision, and why

EQUITY AND COMMUNITY ENGAGEMENT



EQUITY AND COMMUNITY ENGAGEMENT

Housing Survey

- More than 550 responses via online survey

Informal Engagement

- Informal visits to indigenous government offices, businesses, service organizations, government offices, banks, libraries, etc.

Key Informant Interviews

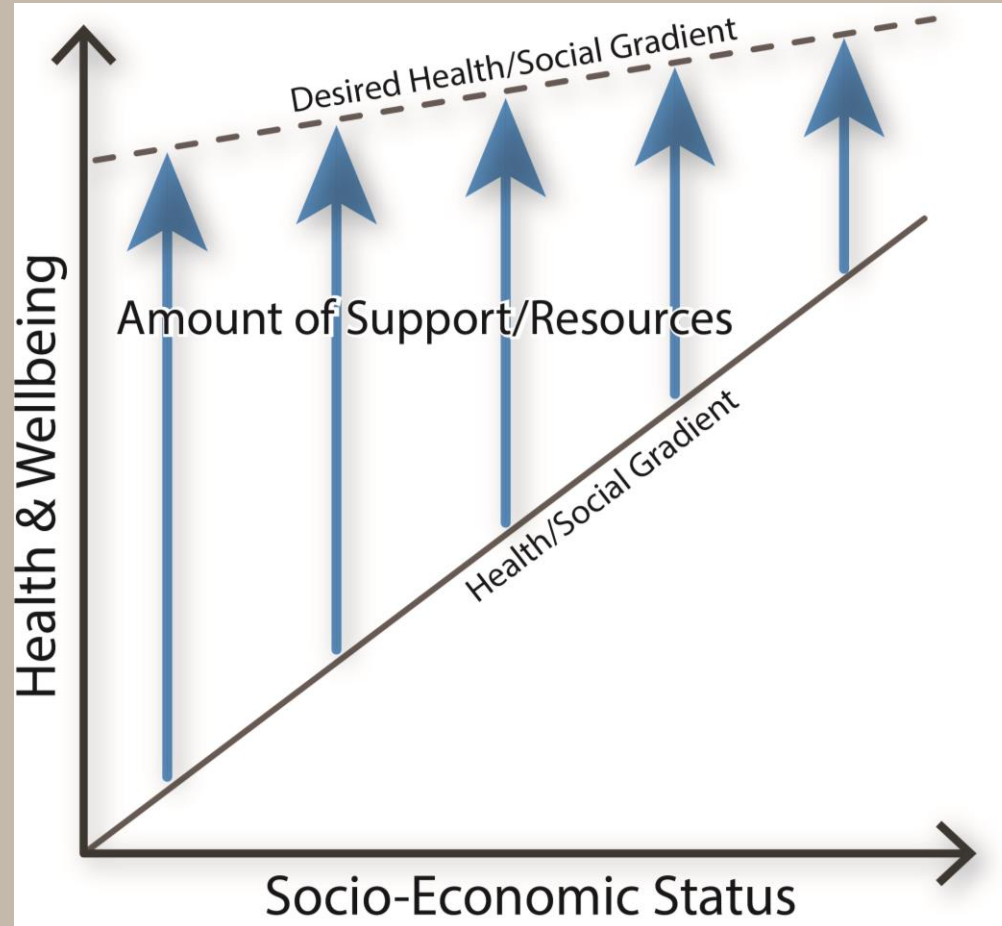
- Conducted in-depth 14 key informant interviews with key stakeholders

Lived Experience Interviews

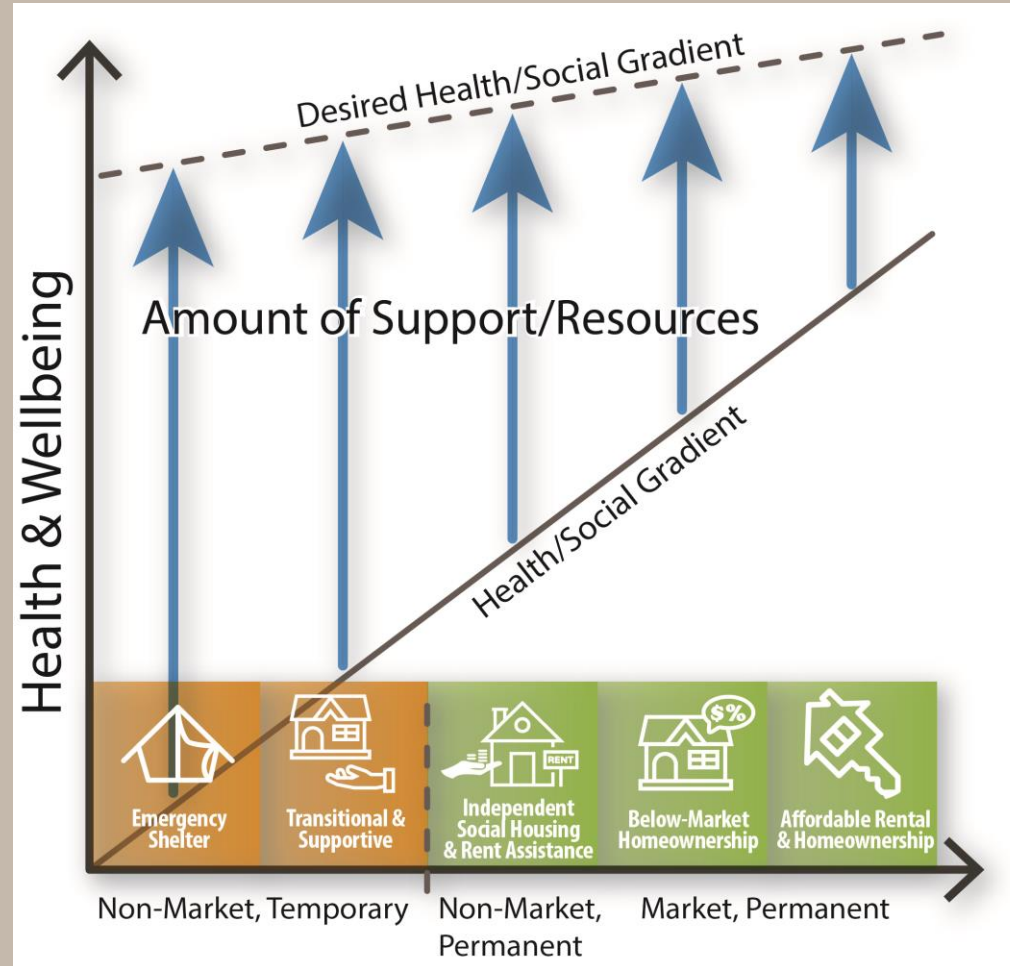
- 45 questionnaires returned



EQUITY AND COMMUNITY ENGAGEMENT



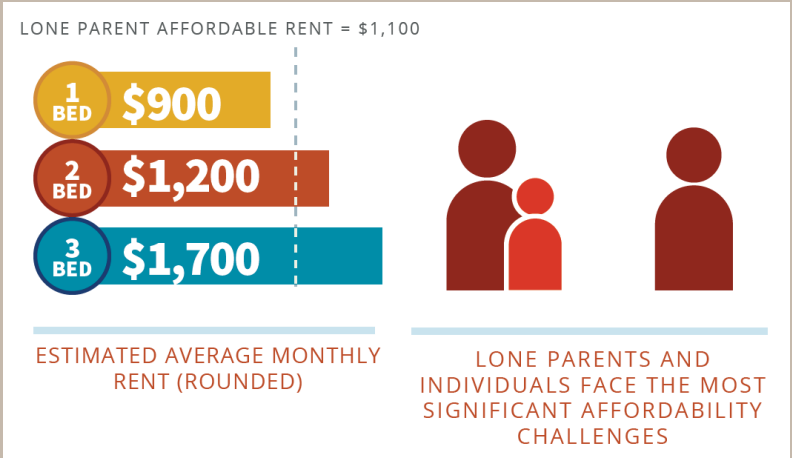
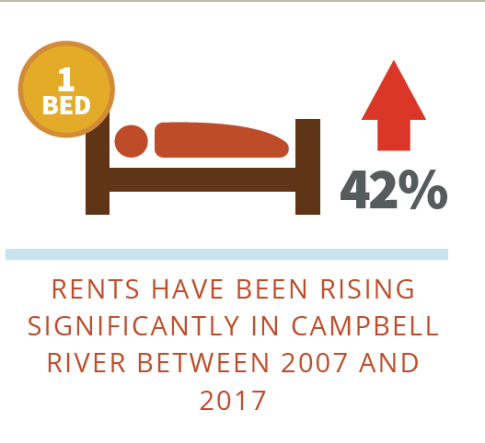
EQUITY AND COMMUNITY ENGAGEMENT



EQUITY AND COMMUNITY ENGAGEMENT

“My husband is First Nations, my children are half as I am white. When my husband went to look for a place, [apartments] etc was not available. I went to the same place and it was available. Not all places were like that but there is a few here.”

Private rentals often have their rent just above income assistance—even a few dollars more. I even had one person come out and say ‘yeah, sometimes we just bump it up a little bit more to make sure we are getting the right people.’



HEALTHY COMMUNITY ENGAGEMENT ACTION GUIDE



plan h

Healthy Community Engagement

This guide is for local governments of rural and urban communities across British Columbia who want to receive community input in a way that is authentic and meaningful.

What you'll find in this Action Guide:

- Actions and examples from Canadian communities
- Further reading and resources
- A glossary of terms
- A summary checklist to support authentic engagement

Local Government Action Guides for Healthy Communities

Healthy People Healthy Places Healthy Environments

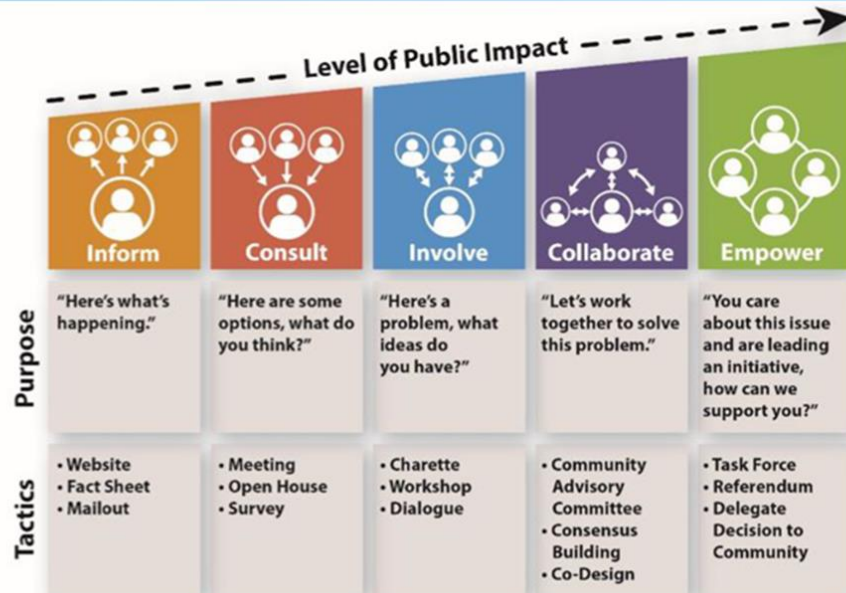
<https://planh.ca/resources/action-guides/healthy-community-engagement-action-guide>

SICAMOUS LIVE MORE STRATEGY

Project Overview

- Community Wellness Plan
- Increasing community engagement capacity through CWC members

HEALTHY COMMUNITY ENGAGEMENT



SICAMOUS LIVE MORE STRATEGY

Engagement Strategies

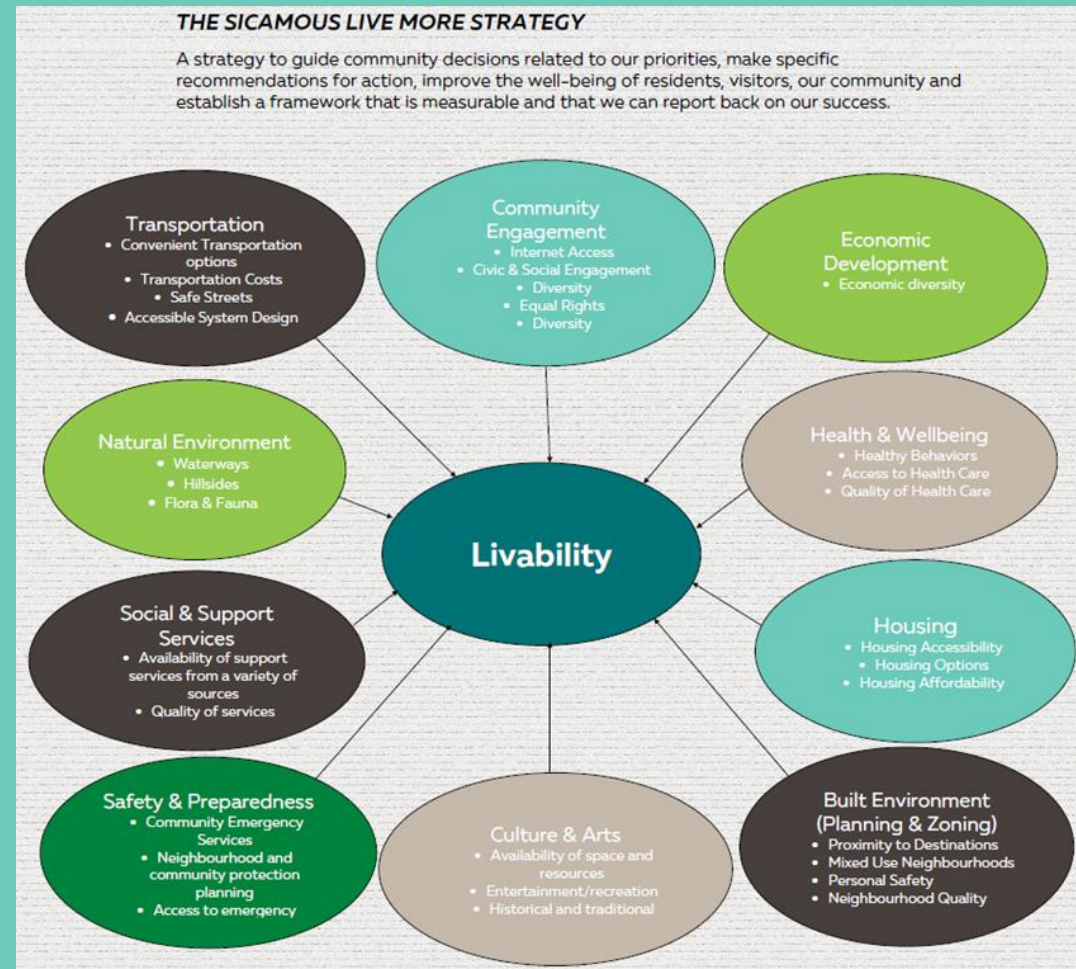
- Emphasis on Equity
- Approaching those that may not want to be approached
- CWC comfort levels & expectations
- CWC strong lead with BC Healthy Communities, IHA and District staff in supporting roles



SICAMOUS LIVE MORE STRATEGY

CWC Engagement Materials:

- Big concepts translated to into easy graphics and materials.
- Engagement tools designed for CWC, facilitation for larger group sessions and tools for 1 on 1 conversations
- Engagement tools: facilitation kit, interview packages, online survey, event kit



SICAMOUS LIVE MORE STRATEGY

